

NEWS FROM THE ANALYTICAL INSTRUMENTATION FACILITY (AIF) - AUGUST 2019



ANALYTICAL INSTRUMENTATION FACILITY

OPEN HOUSE & USER APPRECIATION

When
August 30, 2019

RSVP

<http://www.ncsu.edu/aif/openhouse>

Intro for New Users

1:30pm - 2:30pm

Presenter: Dr. Chris Winkler

Location: MRC 136

AIF Tours

11:00am & 2:30pm

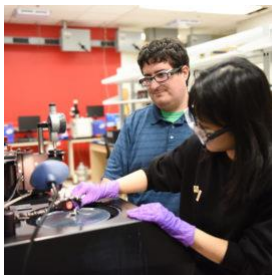
Ice Cream Social

Following tours

Reminder: AIF's Open House on August 30, 2019

Please join us for our annual Open House & User Appreciation on August 30 at 1:30pm. During this time, we'll have an introduction for new users (presented by Dr. Chris Winkler), AIF tours for new and existing users, and an ice cream social featuring NC State's Howling Cow ice cream. Location: Monteith Research Center, room 136.

[RSVP Here »](#)



AIF Representation at Life Science Retreats

As part of AIF's strategic plan to serve life sciences researchers, Shadow Huang (AIF's Associate Director) is presenting AIF's capabilities at multiple life science retreats. AIF will also host a soft/bio-materials user group meeting (late-October date to be announced soon). If you're interested, please send an email to Dr. Huang at hshuang@ncsu.edu.

[Read More »](#)



Carolina Science Symposium

The Carolina Science Symposium will be held at the McKimmon Center on November 8. The symposium is expected to draw about 100 participants, both locally and from the surrounding region. Make sure to register by November 1st!

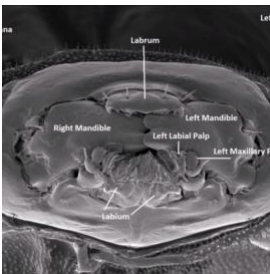
[Learn More »](#)



AIF User Spotlight

Chris Ledford is a fourth year PhD student in Industrial and Systems Engineering under Professor Tim Horn at the Center for Additive Manufacturing and Logistics (CAMAL). He's been using the FIB, Nano-CT, Keyence, High Temperature XRD, and the Talos TEM. Read more about Chris and his research by clicking the link below.

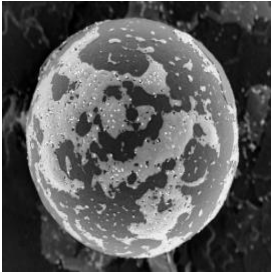
[Meet Chris »](#)



Cool Science: SEM of the Emerald Ash Borer Insect

Want to get up close and personal with insects? Chuck Mooney does. Check out this cool video featuring the emerald ash borer, a beetle native to north-eastern Asia that feeds on ash species.

[Cool Science Here »](#)



RTNN Hosts Nano-Themed Image Contest

In celebration of National Nanotechnology Day in October, the RTNN will be hosting a nano-themed image contest. Have an image you think would win? Submit it to the RTNN at rtnanonetwork@ncsu.edu (competition details in link below).

[Contest Information »](#)

[AIF Spotlight Request »](#)